

WF-screw clamp



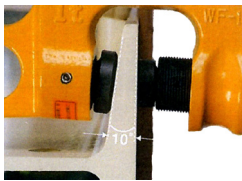
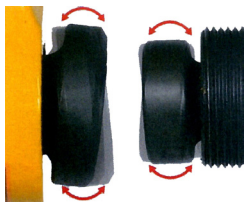
WF screw clamps are the lightest clamps with the highest capacity by means of a double round pivot. Special high-quality Alloy steel housing provides a safety factor of 8. The clamp is equipped with a double locking mechanism with movable pivots that guarantees increased clamping capacity.

Properties

- Double round pivot locking, resulting in stronger clamping force and safe operation.
- Because of the two attachment holes it is possible to carry out work in all directions.
- This clamp can be used to hoist inclined loads such as I-beams.
- Fine adjusting screw thread.
- Preservation powder coating.
- The pivots and the screw are specially treated to prevent rusting.

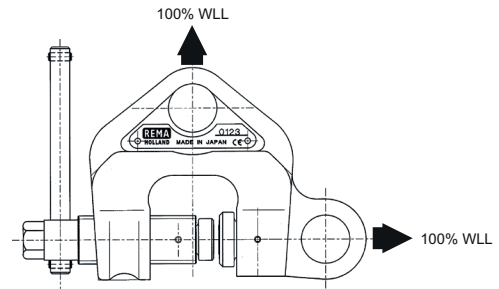
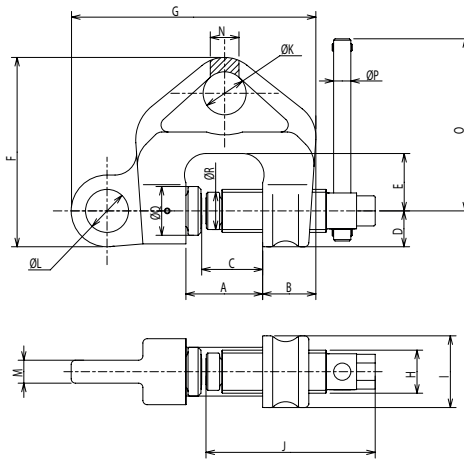
Application

- Hoisting and transport work: Steel material, including H-beams, I-beams, steel plates, tubes, angle profiles and steel posts, as well as steel beams, pillars, welded objects and other workpieces.
- Lowering workpieces easily with any hoisting equipment.
- Dragging steel plates to arrange them on the ground.



Norm:

- EN12100-1/2, EN13155



Type	WLL (kg)	Minimum load (kg)	Jaw opening (mm)	Weight (kg)	ProductId
WF-0.5	500	50	3-28	1.5	3316001
WF-1.0	1000	100	3-40	2.9	3316003
WF-2.0	2000	200	3-45	4.9	3316005
WF-3.0	3000	300	6-49	7.2	3316007
WF-5.0	5000	500	9-53	10.0	3316009

Type	A (mm)	B (mm)	C (mm)	D (mm)	E (mm)	F (mm)	G (mm)	H (mm)	I (mm)	J (mm)	K (mm)	L (mm)	M (mm)	N (mm)	O (mm)	P (mm)	Q (mm)	R (mm)
WF-0.5	41	32	30.5	21	33	108	138	34	42	10	25	24.5	12	16	120	10	26	21
WF-1.0	53.5	38	42.5	25	40	132	172	34	50	10	30	29.5	16	20	120	12	34	26
WF-2.0	60	45	47.5	31	41	157	202	34	62	10	34	33.0	22	28	150	12	36	29
WF-3.0	65.5	52	51.5	35	44	170	230	34	70	10	35	40.5	28	33	160	12	40	36
WF-5.0	71	57	55.5	38	46	187	248	34	75	10	40	45.0	38	40	180	12	41	36